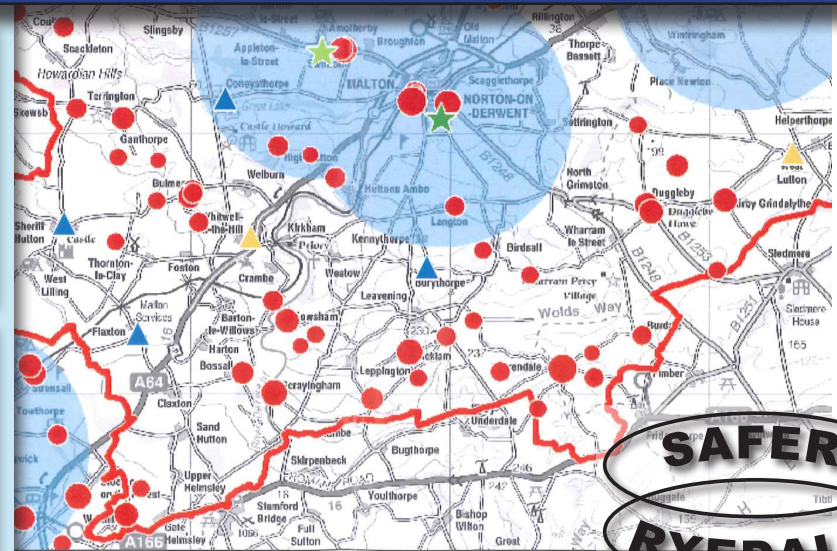


# Partnership Plan 2012 - 2013

[www.ryesafe.org](http://www.ryesafe.org)



*'working towards a Safer Ryedale'*

# Contents

Ryedale District	4
What is the Partnership Plan?	5
How does the Safer Ryedale Partnership work?	6
Review of 2011/12	8
Our Priorities for 2012/13	12
Safer Ryedale Action Plan	14
Funding and Resources	15
Community engagement	16
The future	17
Aims and Objectives for 2012/13	18
Glossary	23
Acknowledgements	24
Contact details	25

# Foreword

Clare Slater

Chair of Safer Ryedale Delivery Team and Head of Policy & Partnerships  
Ryedale District Council

Safer Ryedale Partnership was formed in 1998 and has since then successfully undertaken many projects to make Ryedale a safer place to live, work and visit. Partnership staff, Police Safer Neighbourhood Team, partner organisations and volunteers have worked effectively together to tackle areas of public concern and issues of crime and anti-social behaviour in Ryedale. This has resulted in Ryedale continuing to be one of the top safest places in England.

The last two years have seen many changes in the national policy environment around community safety. County level structures have changed in line with the reduced reporting requirements and most crucially for Safer Ryedale, its funding has reduced by half and will reduce further in 2012-13.

The Partnership has looked for ways to continue to provide an excellent service with diminishing resources. The Safer Ryedale Board was combined with the Ryedale Strategic Partnership Board in 2010, and two out of our four Priorities – Safer Roads and Domestic Abuse – are now delivered by joint Scarborough Ryedale groups

A major change to crime and disorder reduction is the introduction of elected Police and Crime Commissioners

from November 2012, who, among other powers and responsibilities, will make all decisions concerning community safety funding within the Force Area of York and North Yorkshire. Safer Ryedale will be considering how best to prepare for the new regime throughout this year.

In the meantime, we will continue to work with our partners to address our four priority areas and respond to emerging needs and trends. As always, we will use an intelligence led approach to prioritise the allocation and deployment of our resources.

We will continue to listen to our communities through face to face surveys, Community and Police Group forums and through Neighbourhood Watch liaison.

Last year we launched a new three year Plan for the Safer Ryedale Partnership (2011–14). This Plan reviews the first year of that plan (2011-12) and looks ahead to the coming year (2012-13).

If you would like to find out more about our work and how we are contributing towards a safer Ryedale, please see our website [www.ryesafe.org](http://www.ryesafe.org) for our latest



Clare Slater  
Head of Policy & Partnerships Ryedale District Council



# Ryedale District

Situated between York and the Heritage Coastline of North Yorkshire, Ryedale is a rural area containing several small market towns, numerous villages and isolated dwellings. Ryedale covers 150,659 hectares (575 square miles) and is the largest district in North Yorkshire. The main route through the district is the A64 York to Scarborough road. In addition the A170 runs from Scarborough to Thirsk via Pickering and Helmsley and the A169 connects Malton and Whitby.

The district has a population of 53,500 living in 23,000 households and with 0.34 persons per hectare is ranked as having the 7th lowest population density of all 375 local authorities in England. Generally Ryedale has an older population with a greater proportion of people aged over 60 years (29.3% including 2.8% over 85) than the English average (24.2% and 2.1% respectively). It has a smaller proportion of people aged 15-29 years (15.1%) and 30-44 years (17.9%) than average in England (20% and 21.2% respectively).

People in Ryedale are also healthier and live in larger accommodation than the English average. Ryedale has one of the lowest crime rates in the country and much work is undertaken to maintain this level and to gain improvements.



Main picture - Hawbnby Hill & Moor

Above top - Rosedale

Above - Helmsley



# What is the Partnership Plan?

Each Community Safety Partnership (CSP) has a statutory responsibility to produce a partnership plan, which identifies how we will tackle the short, medium and long term priorities associated with crime and disorder in the District.

In order to ensure that we identify the correct priorities we take into account feedback from our local communities, obtained from various surveys and public engagement activities.

We also refer to the Joint Strategic Intelligence Assessment (JSIA) prepared and updated annually by North Yorkshire County Council and North Yorkshire Police. This pulls together data and information from various partners, showing levels and patterns of crime, disorder and substance misuse, changes in those levels and analysis of why those changes have occurred, including a review of the previous year's performance.

The previous Partnership Plan was completed in March 2011, and the tables on p8 summarises the Partnership's performance in the last year. This plan covers the period from April 2012 to March 2013, and will be reviewed and updated next year, based on the data published in the Ryedale JSIA, and other locally identified priorities.

We aim to inform our communities of the priorities for 2012/13 and clearly detail what Safer Ryedale will deliver in order to keep Ryedale District one of the safest areas in the country.

The plan outlines how Safer Ryedale will engage and interact with local communities, giving local people a voice on what matters.

Safer Ryedale conducts street surveys every six months. The most recent, in February 2012, involved nearly 400 Ryedale residents completing questionnaires about issues in their neighbourhoods.

The results reveal that 98% of respondents feel that the crime level in Ryedale is low or fairly low compared with national crime levels and 98% feel that Ryedale is a safe place to live.

Inconsiderate and illegal parking, and speeding motorists were the two main complaints with 23% and 20% of respondents saying this is an issue for them followed by 17% concerned about litter.

Complaints about dog fouling have dropped to fourth place with 15% of respondents finding this is still an issue.

90% of residents think they are well informed or fairly well informed by local Police and the District Council about what is being done to tackle issues of concern.



# How Does the Safer Ryedale Partnership work?

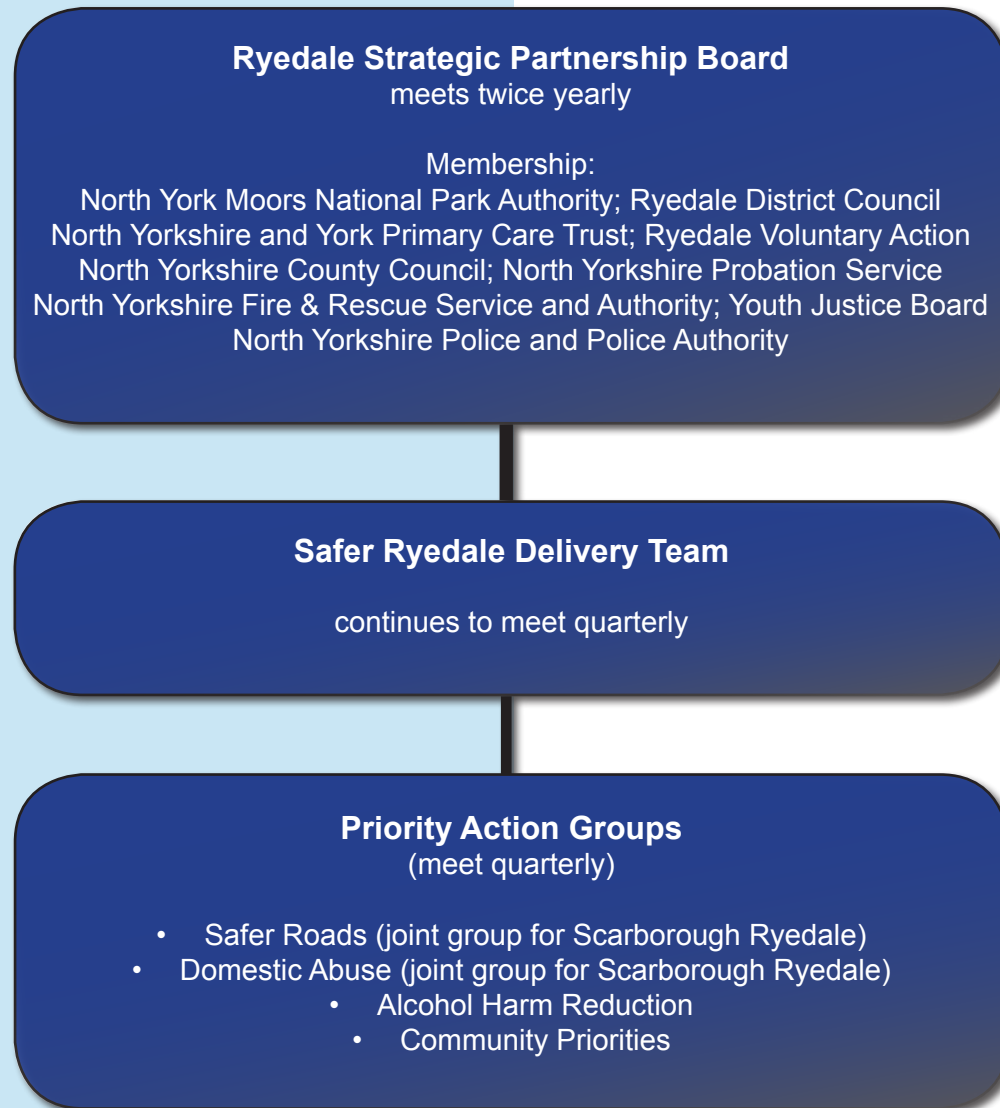
## Safer Ryedale Community Safety Partnership

The Safer Ryedale Partnership brings together representatives from responsible authorities, who under section 17 of the Crime and Disorder Act 1998 have a duty to exercise their functions with due regard to the need to prevent crime and disorder in their area.

The Partnership is required to determine its priorities for action, taking into account the views of those who live and work in the area, and to produce a Partnership Plan which sets out the actions it will take to address the identified priorities.

Since April 2010, the Board of Safer Ryedale has been amalgamated with the Ryedale Strategic Partnership Board, which will, in future meet twice a year. The Delivery Team and Priority Action groups have remained separate from the Ryedale Strategic Partnership; two of the Priority Action groups are now run jointly with the Safer Communities Scarborough partnership.

The diagram below illustrates this relationship:



# How Does the Safer Ryedale Partnership work?

The Partnership was supported in 2010-11 by three members of staff; the Community Partnerships Manager, the Community Partnerships Officer and the Crime and Disorder Officer who all worked closely with NY Police's Ryedale Safer Neighbourhood Team.

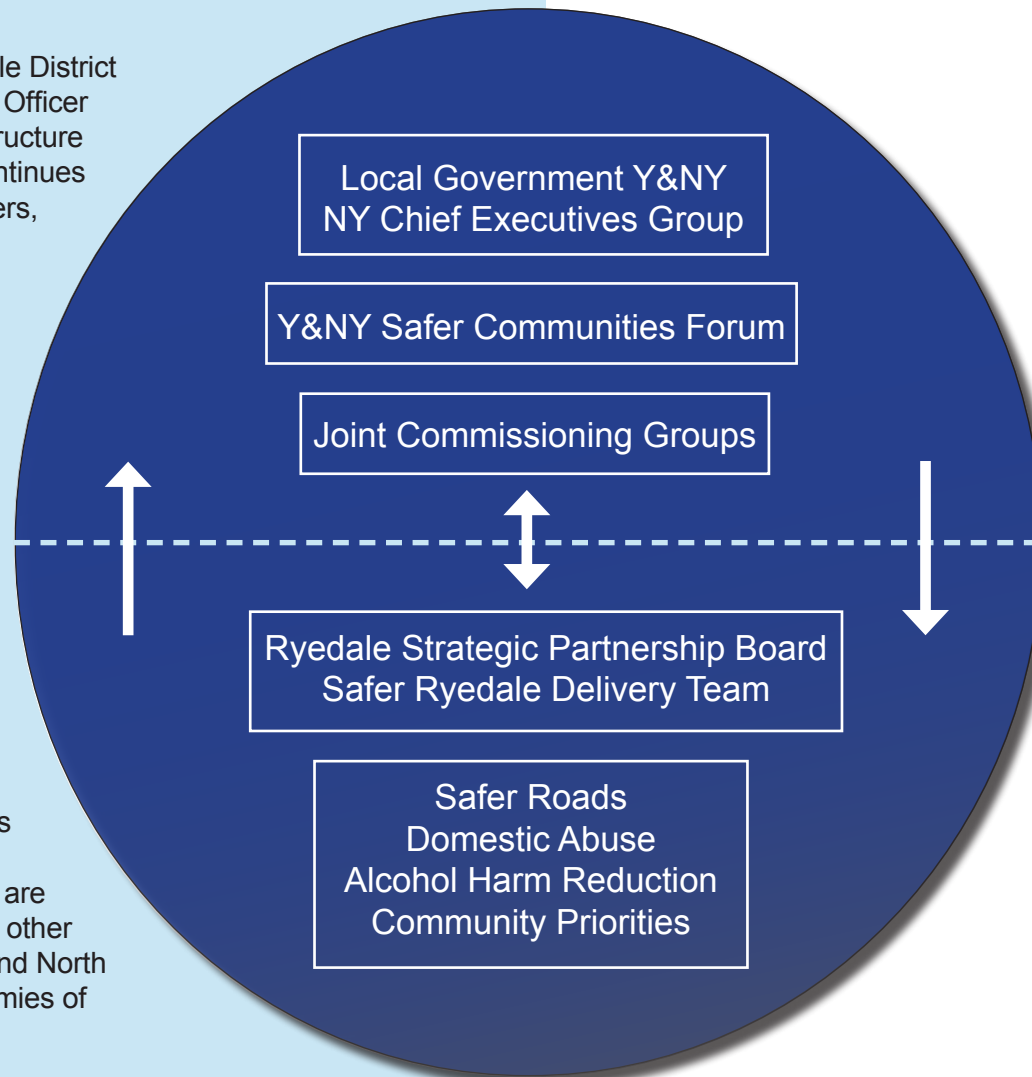
From April 2012 the staff team (employed by Ryedale District Council) will consist of the Community Partnerships Officer and the Crime and Disorder Officer, following a restructure at the District Council. The Safer Ryedale Team continues to work closely with the local police and other partners, benefiting from many years of excellent working relationships.

## The Wider Partnership Framework

Local Government York & North Yorkshire, and the Chief Executives group will continue to meet in 2012, and the York and North Yorkshire Community Safety Forum will report to them. This is attended by the Chair of Safer Ryedale Delivery Team, and the Forum will be considering ways of working with the new Police and Crime Commissioner once she or he is elected (in November 2012). See p 17 for further details.

At a local level, the Safer Ryedale Partnership works to implement the Partnership Plan, which helps to deliver the priorities agreed by the Partnership. We are also committed to working at sub-regional level with other Community Safety Partnerships, through the York and North Yorkshire Safer Communities Forum, to gain economies of scale in tackling issues common to us all.

The diagram below shows the relationship between the county-wide groups and our local delivery structure.



# Review of Partnership Plan 2011 - 12

The table below shows the Partnership's performance in the last year of the Partnership Plan:

**Safer Ryedale Overall Performance Against Performance Plan 2011-12: Table 1**

Indicator	2006 / 7 Baseline	Target % Reduction for March 2010/11	2010/11 Target	2010/11 Total	% Reduction Achieved by March 2011
Burglary Dwelling	69	10%	62	61	-12%
Burglary Non Dwelling	196	5%	186	155	-21%
Criminal Damage	541	10%	487	353	-35%
Damage to Vehicles	200	5%	190	141	-30%

This table shows projected performance against the selected indicators for the new Partnership Plan (2011-14) which is anticipated for April 2012

**Safer Ryedale Overall Performance Against Performance Plan 2011-14: Table 2**

Indicator	2009/10 Baseline	Target % Reduction for March 2013/14	2011/12 Target	2011/12 Total	% Reduction Achieved by March 2012
Shoplifting	74	3%	72	70	-5%
Theft from Motor Vehicle	108	3%	105	107	-1%
Violence	400	3%	386	332	-17%





# Review of Partnership Plan 2011 - 12

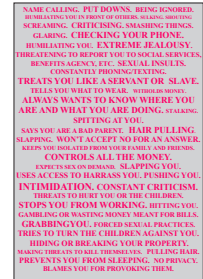
In 2011-12, each of our Action Priorities supported the following projects and initiatives:

## Domestic Abuse

- MARAC's (Multi Agency Risk Assessment Conference) – a meeting where agencies share information about the risk of harm or homicide regarding people experiencing domestic abuse. Multi-agency action plans are developed to support those at most risk. The aim is to increase the safety and well-being of the adults and children involved and reduce the likelihood of repeat victimisation.
- Making Safe Scheme which includes support to victims, security aids, emergency accommodation for perpetrators to remove them from the home and therefore reduce risk to the victim, work to challenge the behaviour of perpetrators, floating support also offered to perpetrator if couple wish to stay together and reduce the risk of future victims, safety planning work with children.

- Specialist domestic violence courts where court staff and magistrates have an increased awareness of the issues relating to domestic abuse. Foundation workers and IDVA also in attendance to offer support to both the victim and perpetrator.
- Awareness raising activities aimed at increasing the number of victims reporting domestic abuse.
- Group work programme for victims to help them break the cycle of domestic abuse.
- Delivering education to children and young people in schools to promote non-violent interpersonal relationships.
- Improved support available to children and young people affected by domestic abuse through work in early years, schools and non school settings.

Measure	Actual 08/09	Target 09/10	Actual 09/10	Target 10/11	Actual 10/11	Target 11/12
Repeat incidents of domestic abuse	N/A	33.75%	25.6%	32%	31.32%	25.5%



SAFER RYEDALE making a difference  
www.ryesafe.org

# Review of Partnership Plan 2011 - 12

## Alcohol Harm Reduction

- Ensuring links between violent crime and nominations to the Integrated Offender Management Scheme (aimed at providing intensive support).
- Extending alcohol treatment linked to Integrated Offender Management to include offenders on short prison sentences, on anti social behaviour orders and perpetrators of domestic abuse not sentenced through the courts.
- Trading Standards are continuing to carry out regular visits to selected licensed premises to check use of refusal registers and that the 'No ID No Sale' regulations are adhered to. Street Scene continued to liaise with North Yorkshire Police informing them of hot spot areas and any drug and alcohol litter finds.
- Working with A & E to identify where people have had their last drink, profiles of drinking behaviour and brief intervention.
- Continuing good links between Housing Officers and Safer Ryedale with joint tenant and problem solving meetings.
- Maintaining a Designated Public Places Order which gives police powers of arrest if people are drinking alcohol anti-socially in the area and refuse to hand it over when requested.
- Using anti-social behaviour enforcement tools to tackle alcohol related disorder.
- Continuation of Pubwatch Groups in Malton/Norton and

Pickering. Quarterly meetings are taking place unless additional meetings are needed to discuss individuals to be banned. If an individual is caught purchasing alcohol for underage drinkers (proxy sales) they are automatically banned from the pubs.

## Community Priorities

- Safer Ryedale continues to work closely with Trading Standards, we currently have 50 No Cold Calling Zones in Ryedale.
- Rural Crime – opportunist theft of metal and cable including cat converters is on the increase and operation tornado is a problem solving plan geared to tackling these thefts. Within op tornado Ryedale police are tackling known scrap metal dealers and also targeting nominals with regard to metal thefts across all areas, regular inspection takes place with scrap metal dealers across all of north Yorkshire to ensure they are not buying metal from anybody who is not in possession of formal identification
- Poaching continues to be an issue and countryside watch schemes remain fully engage, cws also focussing on vehicles looking for scrap metal.- link with metal thefts from farms.
- Castlegate Project - Since the formation of the Castlegate Community Group, much has been achieved. Regular litter picking, weeding and general sprucing up has been done. The residents and management of Bridge House have formulated a good system for daily rubbish collection and also fitted flower baskets to the front of the building. Lamppost banners have been erected and further hanging baskets are planned.



# Review of Partnership Plan 2011 - 12

## Safer Roads

- “Learn & Live” education in nursery and primary schools.
- “Drive Alive” education in secondary schools.
- Multi Agency events focussing on seatbelts and mobile phone use in priority areas that were identified through the data loggers and also around schools.
- Seasonal Campaigns to reduce both drink and drug driving.
- Enforcement Campaigns incorporating the THINK campaign.
- Promotion of the ‘Designated Driver’ initiative.
- Handheld speed laser guns for use in rural areas through Police Safer Neighbourhood Teams.
- Cycle Awareness Training in Schools.
- Developed a speed monitoring protocol which allows the public to make representations via Parish and Town Councils and Safer Neighbourhood Groups to request the deployment of the speed radar equipment.
- Public Events (Motorbike events, Old driver events, attendance at local shows and Emergency Service Days)
- Internet Campaigns
- Speed Matrix sign deployment to evaluate problem areas.



## Overview and Scrutiny Process

The Crime and Disorder (Overview and Scrutiny) Regulations 2009 came into force on 30 April 2009. In conjunction with Section 19 of the 2006 Act, they set out the requirements for discharging Crime and Disorder Overview and Scrutiny arrangements.

All Districts have Crime and Disorder Overview and Scrutiny Committees which undertake the statutory role “to review or scrutinise decisions made or other action taken, in connection

with the discharge by the responsible authorities of their crime and disorder functions”. In Ryedale, the Overview and Scrutiny Committee adopted this role.

The Overview and Scrutiny Committee (Crime & Disorder) considers the final partnership plan annually following its agreement by the Safer Partnership Board.



# Our Priorities for 2012/13

The Ryedale JSIA 2011, published in December last year, noted (in the Executive Summary)

“Ryedale District has been, and remains, an area of low crime and anti-social behaviour. Both are experiencing downwards trends with reductions of 6% and 8% respectively when comparing 2009/10 to 2010/11. The district has the lowest crime rate of all districts within North Yorkshire and is currently in 1st position within the Most Similar CSP group nationally.”

The JSIA recommends that the Community Safety Partnership focus its activity and coordination with a range of agencies on:

## Reducing Reoffending

- Youth re-offending
- Adult re-offending
- Identifying and tackling troubled families and individuals (deprivation, crime, ASB, substance misuse, domestic abuse)

## Reducing the harm caused by alcohol and drugs

- Linked to domestic abuse, violence, binge drinking, ASB

## Supporting the existing North Yorkshire Police Control Strategy themes of

- Serious Acquisitive Crime (focus on burglary and theft from vehicle)
- Offender Management (identification of organised crime groups)

- Policing the Roads
- Protecting Vulnerable People (child sexual crime, online vulnerability, elderly and remote communities, repeat targeting of vulnerable people for ASB/crime)

Safer Ryedale’s Priorities for 2012-13 are based on the data published in the Ryedale JSIA 2011 and other locally identified priorities.

Safer Ryedale Delivery Team, meeting in January 2012 (following publication of the Ryedale JSIA 2011) agreed to retain the existing four ‘Priorities for Action’ for 2012-13:

- Domestic Abuse
- Safer Roads
- Community Priorities
- Alcohol Harm Reduction

Given the changes in personnel taking place among the partnership’s member organisations, the impending changes connected to the election of a Police and Crime Commissioner and the evident success of the existing Action Plans, it was further decided to retain the Aims and Objectives set in 2011/12 for the new Plan in 2012/13.

Each of the Priority Action groups has decided on appropriate actions to deliver its aims, again taking into account the need to focus resources and to add value where possible.

The Action Plan was approved by the Delivery Team in April 2011 and will be presented to the Board for approval at their next meeting in June 2013, alongside this Partnership Plan.



# Our Priorities for 2012/13

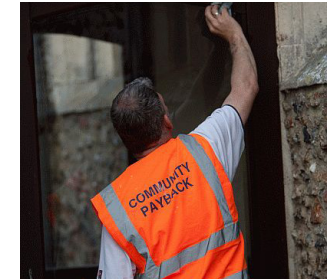
## Reducing Re-offending

Community Safety Partnerships are required to include reducing re-offending within the Partnership Plan. Probation is the lead agency within the Community Safety Partnership for reducing re-offending, however all responsible authorities within the CSPs have overall responsibility for developing their local PPO strategy, and for establishing and managing a scheme that delivers this within national guidance. In York and North Yorkshire strategic oversight of the Deter strand of the PPO strategy is assumed primarily at County level by the Safer Communities Forum.

As part of this role, CSP members are responsible for:

- Identifying and resolving resource and management issues
- Ensuring 'Deter' is appropriately linked with Integrated Offender
- Management (within which there is a distinct PPO cohort).
- Ensuring that an information sharing protocol is in place.
- Implementing and overseeing 'Deter' operations in their areas.
- Engaging relevant partners at a strategic level, e.g. Children's
- Trusts and Directors of Children's Services.
- Identifying need for, and developing capacity to provide, interventions.
- Monitoring outcomes

At an operational level re-offending is addressed through Integrated Offender Management support, intervention and enforcement based on offender needs and presenting offending activity, Youth Deter panels, MAPPA, MARAC and Safeguarding processes.



# Safer Ryedale Action Plan 2012/13

## Performance measures, baselines and targets

Priority Performance Measures	Baseline	Target 2012/13
<b>Domestic Abuse</b>		
NI 32 Repeat incidents of Domestic Violence	2009/10 - 22.2%	Target reduction by 1% per year, 3% by 13-14
<b>Safer Roads</b>		
Safer Roads NI47 Killed or Seriously Injured in Road Traffic Collisions	2010 - 66 Figures taken from NYCC RTA document written by Paul Dea	Target reduction 1% per year over 3 years
<b>Community Priorities</b>		
NI17 Perceptions of ASB	The baseline figure for 2009/10 is not available due to the Place Survey not taking place	Target reduction 0.5% per year
NI19 Rate of proven re-offending by young offenders	2009/10 - 0.74	
Shop Theft	2009/10 - 74	Target reduction 3.5% per year over 3 years
Theft from unattended vehicles	2009/10 - 108	Target reduction 3% per year over 3 years
Violent Crime	2009/10 - 400	Target reduction 3.5% per year over 3 years
Hate Crime	2009/10 - 16	Target reduction 3% per year over 3 years
Burglary of a Non Dwelling	2009/10 - 170	Target reduction 3% per year over 3 years
Domestic Burglary	2009/10 - 53	Target reduction 3% per year over 3 years
<b>Alcohol Harm Reduction</b>		
Violent Crime	2009/10 - 400	Target reduction 3.5% per year over 3 years
Criminal Damage	2009/10 - 397	Target reduction 3% per year over 3 years



# Safer Ryedale Funding and Resources

Attracting funding for Community Safety has always been a challenge in areas like Ryedale that are low in crime; however as a result of spending constraints made necessary by the state of the national economy, Safer Ryedale's funding from central government (via the York and North Yorkshire Community Safety Forum) has reduced significantly every year since 2010/11 and will reduce further in 2012/13.

In North Yorkshire, District Community Safety Partnerships receive allocations based on their respective crime levels and population; in addition the central government pot is top-sliced to fund county-wide strategic initiatives as it is acknowledged that some work is best undertaken from the centre. These projects are listed below.

Last financial year, the allocation made to Safer Ryedale from central government (via NYCC), was £29,986, with a contribution of £5,507 from the NY Police Authority. With a carry over of £9,525, the Partnership had a total budget of £45,018 for 2011/12.

The allocation for 2012/13 is £15,607 from NYCC, with £5,323 from the Police Authority. With the addition of £8,405 carry over, the total budget for 2012/13 is £35,930. In addition, Ryedale District Council agreed funding for one year only towards the core costs of the Safer Ryedale Team of £15,000.

Safer Ryedale will continue to explore opportunities for attracting external funding to complement local delivery and will work to ensure that Ryedale benefits from the county-wide projects listed below.

PRG Safer Communities Forum	Relevant Safer Ryedale Priority
Domestic Violence Co-ordinators	Domestic Abuse
Accident and Emergency Alcohol Support Link Worker	Alcohol Harm Reduction
Alcohol Treatment Requirement	Alcohol Harm Reduction/Reducing Re-offending
Road Safety	Safer Roads
Top-sliced from Community Safety Fund	
Making Safe Temporary Accommodation	Domestic Abuse
MARAC Administrators	Domestic Abuse
Independent DV Co-ordinators	Domestic Abuse
AIM 2 (Risky Behaviour in Young People)	Domestic Abuse
Targeted Activities Programme	ASB

The Safer Ryedale Delivery Team will continue to work with partners to utilise both financial and human (staff and volunteer) resources to develop and deliver activities to address the priorities. These will be monitored on a quarterly basis and progress reported on the website [www.ryesafe.org](http://www.ryesafe.org)



# Community Engagement

Engaging the community is a core function of the Partnership. Without understanding the needs of the local community, priorities would be lost and actions would lack focus. The Partnership will develop and enhance approaches that will allow communities to identify their priorities and have a voice to ensure issues affecting their lives are dealt with and where appropriate, agencies, officers and elected members are held to account.

We are fortunate in Ryedale to have an excellent relationship with our community. 90% of respondents to our recent survey felt informed about what is being done by the local Police and District Council to tackle environmental issues, anti-social behaviour and crime in their neighbourhood. 80% of residents feel confident that their concerns about crime and ASB are being addressed by Safer Ryedale and the local Safer Neighbourhood Police.

A variety of approaches are used to engage with communities, including those that are harder to reach. These include:

- Website [www.ryesafe.org](http://www.ryesafe.org)
- Media opportunities – we have a target of twelve press releases a year, which we exceed.
- Community & Police (CAP) meetings held in six areas of the district, three times a year
- Parish Liaison Forum
- Voluntary Sector Forums (Ryedale Together and the VCS Forum)
- Bi-annual street surveys in Ryedale’s market towns
- The ‘Rural Voice’ project, co-ordinated by Ryedale Voluntary Action, will also contribute to the involvement of the voluntary sector in Safer Ryedale’s processes

- We have an effective and valued network of Watch Groups – 876 in total, made up of:

NHW	352	Business Watch	4
Gold Watch	13	Horse Watch	17
Post Office Watch	11	Pub Watch	90
Rural Watch	293	School Watch	22
Shop Watch	74		

Many of Ryedale’s parishes have written a parish plan and these are another source of information regarding the public’s concerns about community safety.

Community engagement is a legal requirement for the Partnership but we want to ensure it is a positive and worthwhile experience.

During 2012/13 Partnership resources will be allocated to community engagement activities. We are committed to raising awareness, promoting safer communities and offering preventative advice on a variety of issues affecting our communities.





# Safer Ryedale - The Future

Over the next 12 months we will be preparing for further significant changes in community safety as preparations are made for the introduction of Police & Crime Commissioners (PCCs) who will play a key role in Community Safety Partnerships (CSPs) across the police force area of York and North Yorkshire.

On 15 November 2012 elections will be held for a Police & Crime Commissioner (PCC) for the North Yorkshire Police Area. The new Commissioner will take office on 22 November. This will coincide with the abolition of Police Authorities. The PCC will be responsible, on behalf of the public, for appointing the Chief Constable, and for producing the Policing Plan, which must be published by the end of March 2013.

However, the PCC's role will extend beyond policing to the wider crime and disorder agenda, forging links (and often taking a leadership role) in areas such as: the Local Criminal Justice Board, CSPs, York & North Yorkshire Safer Communities Forum, youth justice, re-offending, substance misuse and, of course, with the many vital partners who contribute to crime & disorder and community safety in the area.

The PCC will need to keep in touch with what is happening in local communities, through a variety of formal and informal contacts including the new Police and Crime Panel (which will include councillors from each area), local councils' overview and scrutiny panels, local community groups and partners.

From April 2013 all Community Safety grant funding will be paid to the PCC; until the new Commissioner is in post, CSPs will have no idea what decisions she or he might make as to what resources will be made available to Community Safety, or how the Commissioner will want to engage with CSPs.

At the present time, we have no way of knowing how the PCC for York and North Yorkshire will choose to conduct Community Safety across the force area or what the CSP landscape will look like in Ryedale in 2013.

Safer Ryedale will continue to work with all our partners within the district and force-wide to adapt to changes as they arise, in order to continue delivering the community safety solutions our communities expect.



# Priorities Action Plan 2012/13

<b>Domestic Abuse</b>	
<b>Aim:</b>	To protect and support people experiencing domestic abuse in Scarborough, Whitby and Ryedale
<b>Objective 1:</b>	To reduce repeat MARAC'S
<b>Objective 2:</b>	To deliver awareness raising and education initiatives
<b>Actions</b>	Continue to develop the availability of voluntary perpetrator programmes and monitor their effectiveness Deliver Domestic Abuse awareness training to victims across Scarborough & Ryedale. Train the Trainer Sessions now delivered to 2 Champions within the Ryedale area who will deliver training within their own organisations
<b>Objective 3:</b>	Develop and maintain Multi-Agency Partnership Working
<b>Actions</b>	Increase representation to the existing DAF membership for the hard to reach groups including BME, travellers, gay, bi sexual and Transgender groups Increase representation to the existing DAF membership for the services and agencies working with people with mental health issues
<b>Objective 4:</b>	Develop and maintain services for children and young persons
<b>Actions:</b>	Support the continuation of the delivery and availability of the Specialist Children's Therapeutic Worker at Domestic Abuse Services to children and young people Continue to deliver Domestic Abuse education packages into schools
<b>Objective 5:</b>	Improve availability of appropriate accommodation for victims of abuse
<b>Actions:</b>	Provision of Refuge accommodation
<b>Objective 6:</b>	Making Safe Service Review
<b>Actions:</b>	Continued awareness around MS & referral to Perpetrator Scheme from custody Transition of perpetrators to independent living Develop links with health & social services
<b>Objective 7:</b>	Ensure the Scarborough, Whitby and Ryedale Action Plan relates to the DA County Wide Action Plan



## Safer Roads

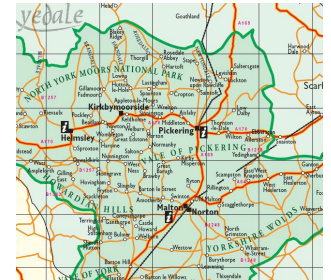
<b>Aim:</b>	<b>To minimise the levels of Killed and Seriously Injured on the roads of Ryedale</b>
<b>Actions:</b>	<p><b>Motorcycle Campaign to include:-</b></p> <ul style="list-style-type: none"> <li>• Awareness raising events at Emergency Service Days and Ryedale Show</li> <li>• Cross County initiatives (Cleveland, West Yorkshire)</li> <li>• Internet Campaigns (Think Website)</li> <li>• Enforcement on key routes ie A170</li> </ul>
	<p><b>Older Drivers (Cars) Campaign to include:-</b></p> <ul style="list-style-type: none"> <li>• Older drivers events, consult Age UK and Ryedale Older Persons Forum</li> <li>• Possible use of volunteer Advanced Driving Instructors</li> <li>• Seasonal events including reaction tests, eye tests and ADI assessments</li> <li>• Arrive Alive Classic presentations</li> </ul>
	<p><b>Young Road User Campaign to include:-</b></p> <ul style="list-style-type: none"> <li>• Drive Alive NYCC countywide Drive Alive within schools identified as a priority. Once this priority list is confirmed the schools in both districts requiring local targeting will be clearer. (Potential also for Young Farmers group, Cadets and Atmosphere and alternative education packages)</li> <li>• Education young school children “Learn &amp; Live”</li> <li>• Daniel DVD for parents of young drivers</li> <li>• Develop Campaign Ride Aware for 2 wheel road users</li> <li>• Possible campaign UTube Video Clips, DVD, Drive Wise, Think Campaign, Tales of the Road. Use NYCC 4Youth face book page Deployment of Data Loggers and use of the 4 Matrix Signs:- Continual deployment of the data loggers and signs where a need is identified.</li> </ul>
	<p><b>Operation Siren Multi Agency Campaigns:-</b> The events focussing on seatbelts and mobile phone use will continue within Scarborough and Ryedale (Priority areas identified through the data loggers and also around schools), the Safer Neighbourhood Teams will continue to support where possible.</p>
	Laser Speed Enforcement & FPN



# Priorities Action Plan 2012/13

## Community Priorities

<b>Aim:</b>	To minimise the effects of crime and anti social behaviour on the communities within Ryedale thereby contributing to a positive view of the District.
<b>Objective 1:</b>	To reduce theft and violence by 10% 2011-2014
<b>Actions:</b>	Continue Nominated Neighbour, Sheduction and Seasonal Crime Reduction Initiatives eg Expand and publicise No Cold Calling Zones
	Continue to promote Watch Schemes
	To increase the use of the Restorative Justice Scheme and report to Delivery Team on progress
	Promote Operation Tornado to decrease the number of metal thefts. Carry out regular multi agency checks by all agencies
	To promote Pub Watch within Ryedale and identify what actions can be taken to prevent offences in the Ryedale night time economy
<b>Objective 2:</b>	Improve perceptions of anti-social behaviour and reduce fear of crime by publishing and responding to public priorities highlighted by the community consultation survey
<b>Actions:</b>	To review Wentworth Street Car Park and identify actions
	Maintain an ongoing consultation process on perception of anti social behaviour by utilising the Safer Ryedale website and twice yearly street surveys to be carried out in September 2012
	Make full use of media and other publicity vehicles to reduce crime and fear of crime
<b>Objective 3:</b>	To target young offenders, vulnerable people and those at risk of offending through support, education and diversionary activities to reduce incidents of repeat offending
<b>Actions:</b>	Maintain baseline data of young offenders and others on ASBO, ABC and MAPS Groups
	Work with the Police to assess complaints of anti-social behaviour, address through problem solving and deliver interventions
	Ensure continuance of the MAPS Groups by close liaison with four secondary schools and attendance at all meetings
	To increase the number of referrals to Youth Support Service through the re-adoption of YACAB referrals



# Priorities Action Plan 2012/13

## Alcohol Harm Reduction

Aim:	To deliver the contents of the previous Alcohol Harm Reduction Strategy and develop the new strategy for the Ryedale District.
Objective 1:	To continue to raise awareness on the consequences to individual's health and community welfare
Actions:	Review the Alcohol Harm Reduction Strategy and align with the County Strategy
	Carry out a Mini ARC Campaign in Malton
	Link with the Cambridge Centre and A&E Manager to feedback data to the Steering Group
	Link in with the schools survey in order to identify the need for further intervention
	Explore opportunities to raise local awareness and link with the Cambridge Centre/NYP
Objective 2:	To reduce the number of repeat offenders linked to alcohol related offences
Actions:	Maintain links to the Ryedale Women's Hub in order to assess its impact on re-offending
	To determine how the steering group can make the best use of the data available
	To increase the amount of Alternative Disposals with regard to alcohol related offences
	To establish links to the After Math Project
Objective 3:	To reduce the level of alcohol related crime and disorder offences
Actions:	Continue to identify, monitor and actively patrol those public places where young people gather to drink, Youth Support Service and NYP to share information.
	Continue the media programme for the district, promoting links to national campaigns/initiatives and obtain merchandise from Drink Aware
	NYP to distribute AA/Cambridge Centre literature when attending incidents where offenders and/or victims are perceived to have issues relating to alcohol.
	Targeted outreach work in Pickering/Malton/Norton with referrals to the Youth Support Service.
	Targeted patrols around underage drinking inside licensed premises
	NYP and Cambridge Centre to share information on arrests involving alcohol. Followed up with targeted action or letter.
	Offer an incentive of a shorter ban to people barred from licensed premises by Pubwatch (ie brief intervention with Cambridge Centre). Also link with AA and NA
	Partnership to support a rejuvenated Pubwatch Scheme in Malton/Norton that includes agreed standards of behaviour and unacceptable conduct by customers. Carry out early intervention through police patrols, CCTV, apex radios and increased communication with door staff. Identify those groups and individuals who may cause problems at an early stage and make positive interventions to prevent incidents occurring. Support a 'banned from one banned from all' approach. Licensees, door-staff and partner agencies to take collective responsibility in promoting a safe night time economy by working more closely together.



# Priorities Action Plan 2012/13

## Community Development

<b>Aim:</b>	To encourage community participation to inform Safer Ryedale's work
<b>Objective 1:</b>	To develop opportunities to involve the community in raising concerns, setting priorities and to receive information on Safer Ryedale's Work
<b>Actions:</b>	Update the Safer Ryedale website
	Gather community concerns and feedback via website questionnaire ie street survey
	Provide a Safer Ryedale update at Community and Police meetings
	Monitor numbers of Neighbourhood Watch Co-ordinators



# Glossary

ABC	Acceptable Behaviour Contract
AHRG	Alcohol Harm Reduction Group
ASBO	Anti Social Behaviour Order
ATC	Auto Traffic Counter
CAF	Common Assessment Framework
CAP	Community and Police liaison meetings
C&DO	Crime and Disorder Officer (RDC)
CPM	Community Partnerships Manager (RDC)
CPO	Community Partnerships Officer (RDC)
CSCM	Community Safety Crew Manager (NY Fire & Rescue)
CSP	Community Safety Partnership
CSS	Community Safety Sergeant (NY Police)
CYP	Children and Young People's working group
DAS	Domestic Abuse Services
DV	Domestic Violence
MAPS	Multi-agency Problem Solving group
MARACs	Multi-agency Risk Assessment Conferences
Missdorothy.com/Miss Dot	Computer software used in primary schools to raise children's awareness of risky and/or unacceptable behaviour (their own or other people's)
NCCZ	No Cold Calling Zone
NHW	Neighbourhood Watch
PCC	Police and Crime Commissioner
PCSO	Police Community Safety Officer
PPO	Prolific and other Priority Offenders
RTC	Road Traffic Collision
SNT	Safer Neighbourhood Team (NY Police)
Tier 3 Services	Drug and alcohol abuse intervention – requires referral
Watch Over Me	As Missdorothy.com above, for secondary schools



# Acknowledgements

Safer Ryedale wishes to thank the following organisations and their staff for all their help, support and involvement in the production of the Joint Strategic Intelligence Assessment and the Partnership Plan

North Yorkshire Police

North Yorkshire Fire & Rescue

North Yorkshire County Council

Ryedale District Council

Ian Cunningham, County Analyst

District based Community Safety Partnerships in North Yorkshire, and Safer York



Safer Ryedale Partnership  
Ryedale District Council  
Ryedale House  
Old Malton Road  
Malton  
YO17 7HH

Tel: 01653 600 666  
email: [communitysafety@ryedale.gov.uk](mailto:communitysafety@ryedale.gov.uk)  
[www.ryesafe.org.uk](http://www.ryesafe.org.uk)



[www.ryesafe.org](http://www.ryesafe.org)



# Contact Numbers and Web Sites

**Safer Ryedale** 01653 600666  
[www.ryesafe.org](http://www.ryesafe.org)

**Ryedale District Council** 01653 600666  
[www.ryedale.gov.uk](http://www.ryedale.gov.uk)

**North Yorkshire Fire & Rescue Service** 01609 780 150  
[www.northyorksfire.gov.uk](http://www.northyorksfire.gov.uk)

**North Yorkshire Police** 101  
[www.northyorkshire.police.uk](http://www.northyorkshire.police.uk)

**North Yorkshire Police Authority** 01765 641 839  
[www.nypa.org.uk](http://www.nypa.org.uk)

**North Yorkshire County Council** 01609 780 780  
[www.northyorks.gov.uk](http://www.northyorks.gov.uk)

**North York Moors National Park** 01439 770 657  
[www.visitnorthyorkmoors.org.uk](http://www.visitnorthyorkmoors.org.uk)

**North Yorkshire & York Primary  
Care Trust** [www.nyypct.nhs.uk](http://www.nyypct.nhs.uk) 01423 815150

**North Yorkshire Probation Service** 01609 778644  
[www.nyprobation.org.uk](http://www.nyprobation.org.uk)

**North Yorkshire Youth Justice Service** 0845 300 5430  
[www.ny-yjs.org.uk](http://www.ny-yjs.org.uk)

**Domestic Abuse Helpline** 0808 200 0247

**Crimestoppers** 0800 555 111

**North Yorkshire Trading Standards  
Doorstep Crime Hotline** 0845 330 3313

